

Setting up a small LAN between two PCs using the ASR8400 By NeOrigo

A while ago I wanted to share files and folders between my XP Pro PC (PCA) and my Win98 laptop (PCB) using the ASR8400 router. The router acts as an intermediary between devices and moves the data from computer to computer, creating a Local Area Network (LAN).

This guide should apply to most setups - It's not a complete guide, more of list of steps that I had to make.

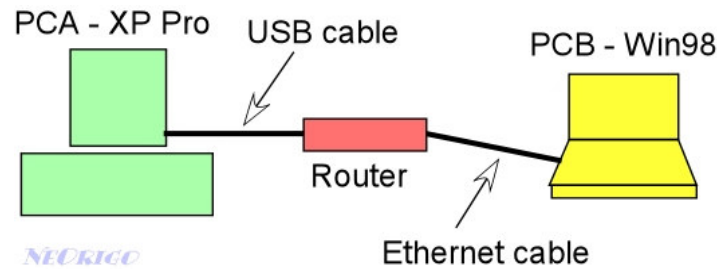


Fig 1. Basic setup for two PCs

The basic steps I took to get the LAN set up:

1. PCA was already connected up to the router for Net access (via USB). I bought a LAN card for PCB, installed it and plugged it into the router with an Ethernet cable (not a crossover cable because this is designed to go directly between PCs, not between a router and a PC).
2. Straight away, because my router was already setup with my ISP details, I was able to connect to the Net with PCB via the router. Some people may find it necessary to run the Origo Adapter Setup software, which will basically set everything to default and remove any proxy settings.
3. To get each PC to see something on the other PC, files/folders must be shared. On PCA, since it runs XP Pro, I have a shared folder on there anyway called 'Shared Documents'. On PCB, I set a folder in 'My Documents' to be shared.

To share a folder, right-click on it and click on 'Sharing and Security' (in Win98 this was just 'Sharing'). Select the Share ('Shared As' in Win98) option and then put the name you want to give the folder when it appears on the network.

4. Next were the user accounts. Since I already had an account for myself on PCA, I created an account with the exactly same name and password on PCB. So for example if your login name on one PC was 'Bob' and your password was 'secret', you would need an identical account setup on the other PC. Obviously then, to use these accounts you will need to logon to your PCs using the same credentials. Also make sure the workgroup is the same for both PCs (see appendix).
5. Check that the network adapters are correctly setup. PC's and other devices use protocols, which are a bit like languages – ideally you want both PCs using the same one. The one we are interested in is TCP/IP. At one time Netbeui (another protocol) could have been used, but Microsoft decided to remove it from XP, and so it can be a pain to use it with XP now. See the pages at the end of this guide in the Appendix for more.

6. Finally, to access another PC from:

XP Pro – Double click on the 'My Computer' icon on the Desktop. On the left, select 'My Network Places'. Then on the left select 'View workgroup computers'. You should see two icons, one for the PC you are on, and another representing the other PC. Double click on it and you should be able to browse your shared folders.

Win 98 – On the Desktop, double-click 'Network Neighborhood'. You should see two icons, one for the PC you are on, and another representing the other PC. Double click on it and you should be able to browse your shared folders.

Appendix:

Workgroups:

For Win98:

- i) Go to the Start menu – click on it and open the 'Control Panel' (Settings->Control Panel)
- ii) Double click on 'Network'. You should now see a window with three tabs: one will be Identification. Select this
- iii) Enter the workgroup name you wish to use.
- iv) Click on OK

For XP:

- i) Right-click on the 'My Computer' icon on the Desktop.
- ii) Click on 'Properties'. Select the 'Computer Name' tab.
- iii) Click on the 'Change' button, enter the workgroup name you wish to use.
- iv) Click on OK

To check that your network card (NIC) is using TCP/IP do the following:

For Win98:

- i) Go to the Start menu – click on it and open the ‘Control Panel’ (Settings->Control Panel)
- ii) Double click on ‘Network’. You should now see a window with three tabs: Configuration being the first.
- iii) If you see nothing beginning TCP/IP then click on ‘Add’ then choose ‘Protocol’, click on ‘Add’. Then select ‘Microsoft’ on the left hand list and ‘TCP/IP’ on the right. Then click on OK.
- iv) Once installed, go back to the Configuration tab in Network settings (mentioned in above).
- v) Select your NIC from the list and click on ‘Properties’
- vi) Select the ‘Bindings’ tab and make sure there is a tick under TCP/IP. This will stick or ‘bind’ the NIC with the TCP/IP protocol.
- vii) Click on OK, and then OK.

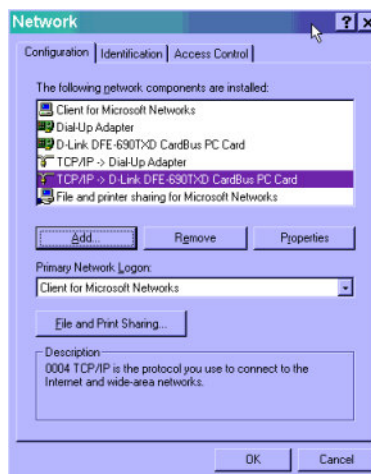


Fig 2. TCP binding to NIC in Win98

For XP:

- i) Go to the Start menu – click on it and open the 'Control Panel' (Settings->Control Panel)
- ii) Double click on 'Network Connections'. You should now see a window with some connection icons: one will represent your NIC.
- iii) Right-click on it and then select 'Properties'. Now you will see the window showing the various protocols 'bound' to the NIC.
- iv) If TCP/IP is not in the list then click on 'Add' then choose 'Protocol', click on 'Add'. Then select 'Microsoft' on the left hand list and 'TCP/IP' on the right. Then click on OK.
- v) Once installed, go back to the NIC properties (mentioned in above).
- vi) One entry should read 'Internet Protocol (TCP/IP)' – make sure this ticked.
- vii) Click on OK

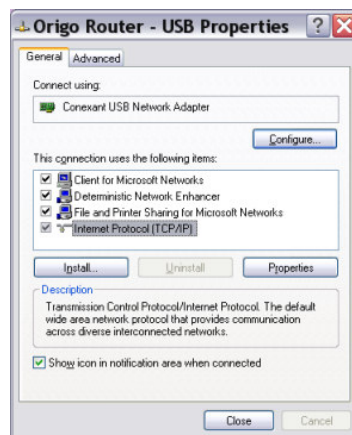


Fig 3. TCP binding to NIC on XP

To install the TCP/IP protocol, you may need to have your Windows CD to hand.

This guide was created with the help of Gus_ and Mugwump from the Origo forums.